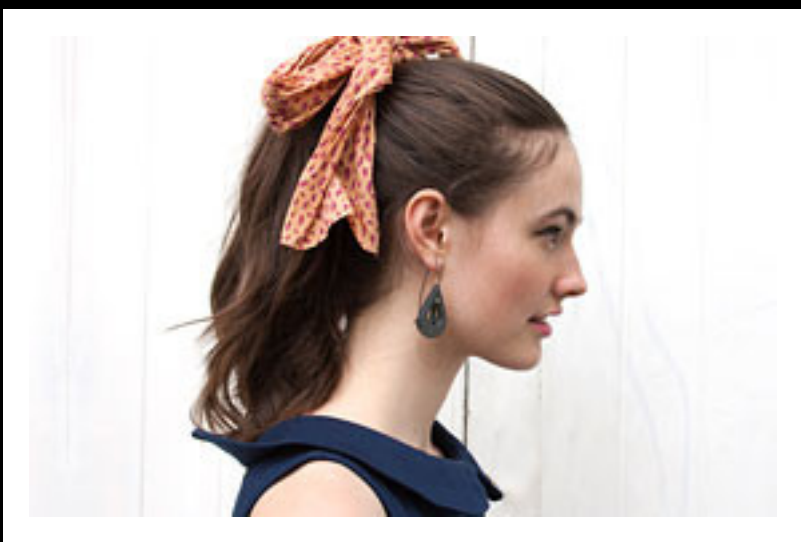


SIM LUTTIN

Sim Luttin is a contemporary jeweller who lives and works in Melbourne. Her current work, poetically explores notions of beauty, nostalgia and passing time. Sim completed a Masters in Metalsmithing and Jewellery Design, Indiana University and a Bachelor of Fine Arts, Gold and Silversmithing, RMIT University.



WHAT ARE WE LIKE?

Edition X brings you exclusive commissioned works from a variety of artists and makers from around the globe. Everything is unique and all collections are made in very limited set editions.

[MORE](#)



THE DAILY EDITION

A new delivery of 'Jelly Crystal' bangles from Kate Rohde has made our hearts go boom, boom, boom. Jump in quick or you'll miss out!! There's only six... five...four available.

[MORE](#)



MOTHER'S DAY

We've turned up the awesome factor by hand-picking some choice gifts for your special mama. Enter the code LOVEYOURMUM at checkout to receive free shipping.

[MORE](#)

my email address

[SUBSCRIBE](#)



LOVE ME DO

